

Hardness tester THL280 PLUS



Features

LCD display of 128×64 matrix with back-light, showing all functions and parameters.

Converts to all common hardness scales (HV, HB, HRC, HRB, HRA, HS).

English displaying and easy and convenient menu operation.

Powerful PC Software available and USB 2.0 interface & with the USB Protective Membrane.

7 types of Impact Device optional, which don't need to be recalibrated when changing them.

Memory of 600 groups data (impact times:32~1) .



Lower limit setting and sound alarm.

Material of "cast steel" is added; HB values can be read out directly when D/DC impact device is used to measure "cast steel" work piece.

Printer be separated from main unit and copies of testing results can be printed as required.

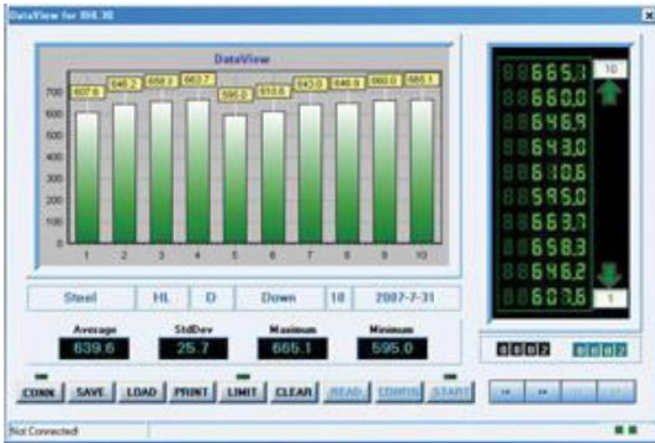
AA battery can easy change and transport.

Inbuilt function of Software Calibration.

Specifications

Hardness scale	HL, HB, HRB, HRC, HRA, HV, HS
Memory	48~600 groups (impact times: 32~1)
Measuring range	HLD (170~960) See below table 1 and table 2
Accuracy	$\pm 4\text{HLD}$ (760 \pm 30HLD) error of displayed value 4HLD (760 \pm 30HLD) repeatability of displayed value
Standard Impact Device	D
Optional Impact Devices	DC/D+15/G/C/DL
Max. Workpiece Hardness	996HV(For Impact Devices D/DC/DL/D+15/C) 646HB(For Impact Device G)
Min. Radius of Workpiece	Rmin = 50mm (with special support ring Rmin= 10mm)
Min. Workpiece weight	2~5kg on stable support 0.05~2kg with compact coupling
Min. Workpiece thickness	5mm (Impact Devices D/DC/DL/D+15) 1mm (Impact Device C) 10mm (Impact Device G)
Min. thickness of hardened surface	0.8mm
Power	AA battery
Continuous Working time	approx. 100 h (no back light off)
Charging time	2-3.5 h
Operating temperature	0~40°C
Relative humidity	$\leq 90\%$
Overall dimensions	125*67*31mm (main unit)
Weight	0.3kg (main unit)

Datapro for Hardness tester THL280 PLUS



Standard Configuration

Seq	Name	Qty	Remark
1	Main Unit	1	Standard configuration
2	Impact Device Type D	1	Standard configuration
3	Test Block Type D	1	Standard configuration
4	Cleaning Brush	1	Standard configuration
5	Supporting Ring	1	Standard configuration
6	Communication Cable	1	Standard configuration
7	Manual	1	Standard configuration
8	Carrying Case	1	Standard configuration
9	DataPro Software(USB)	1	Standard configuration
10	Battery Case Tool	1	Standard configuration
11	Mini-printer	1	Optional configuration