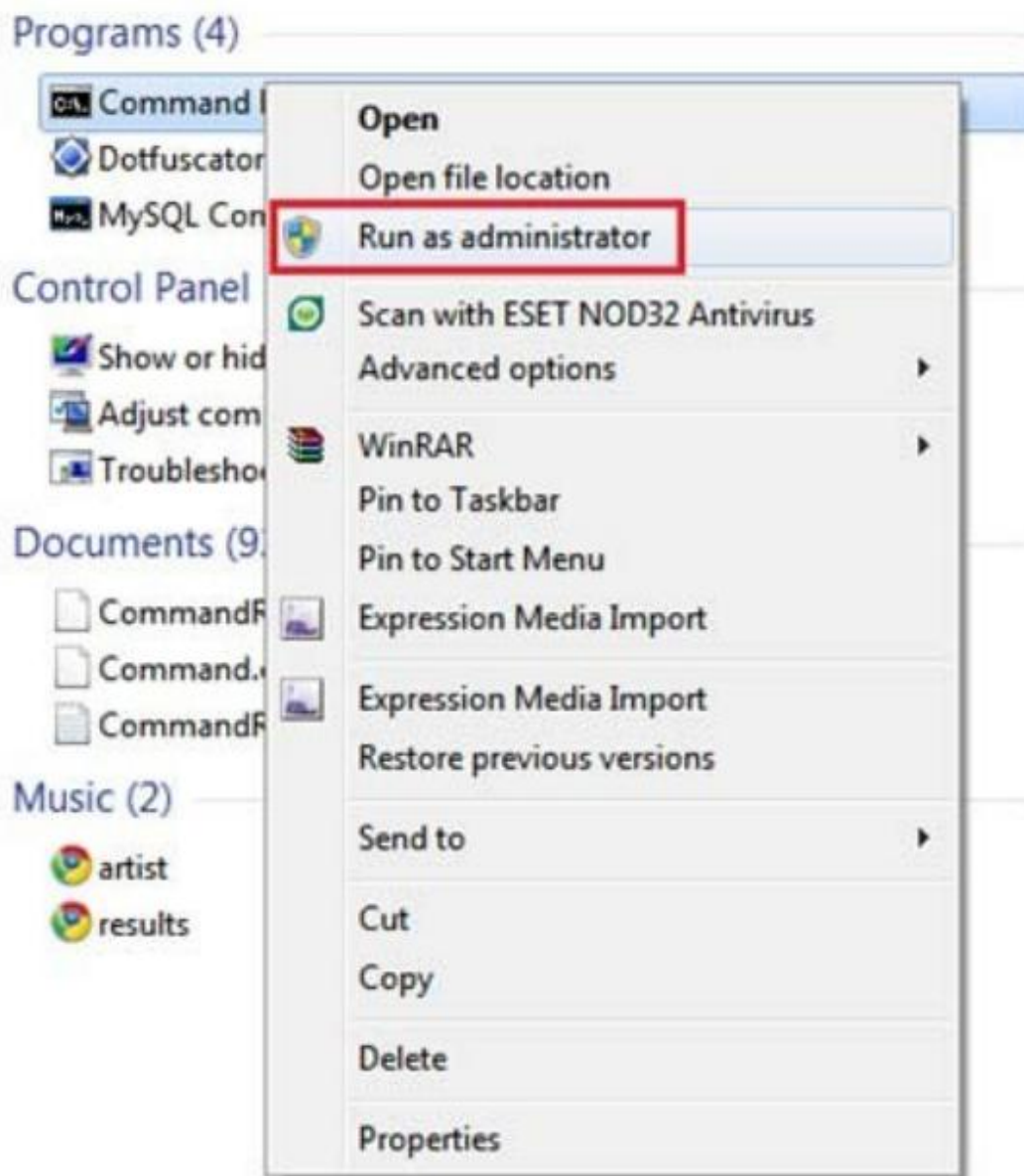


First: active administrator

Step 1:

- Type 'cmd' in the start menu search
- Right click on the Program 'cmd'
- Select "Run as administrator as picture below show



Step 2: In Command Prompt

- Type in the command **net user administrator /active:yes**
- Click enter

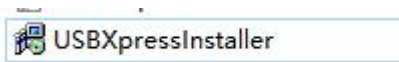


```
Administrator: C:\Windows\System32\cmd.exe
Microsoft Windows [Version 6.1.7600]
Copyright (c) 2009 Microsoft Corporation. All rights reserved.

C:\Windows\system32>net user administrator /active:yes
The command completed successfully.

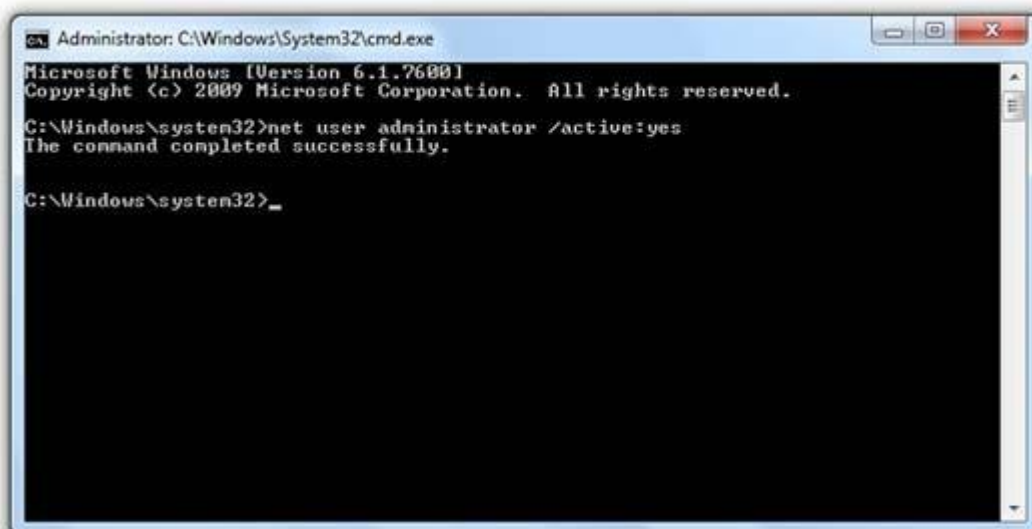
C:\Windows\system32>_
```

Second: SHIFT+ right click driver file:



And choose "copy as path"

Paste it into here and click enter to install driver.



```
Administrator: C:\Windows\System32\cmd.exe
Microsoft Windows [Version 6.1.7600]
Copyright (c) 2009 Microsoft Corporation. All rights reserved.

C:\Windows\system32>net user administrator /active:yes
The command completed successfully.

C:\Windows\system32>_
```

Then Restart the computer and install the Dgraph software to use.